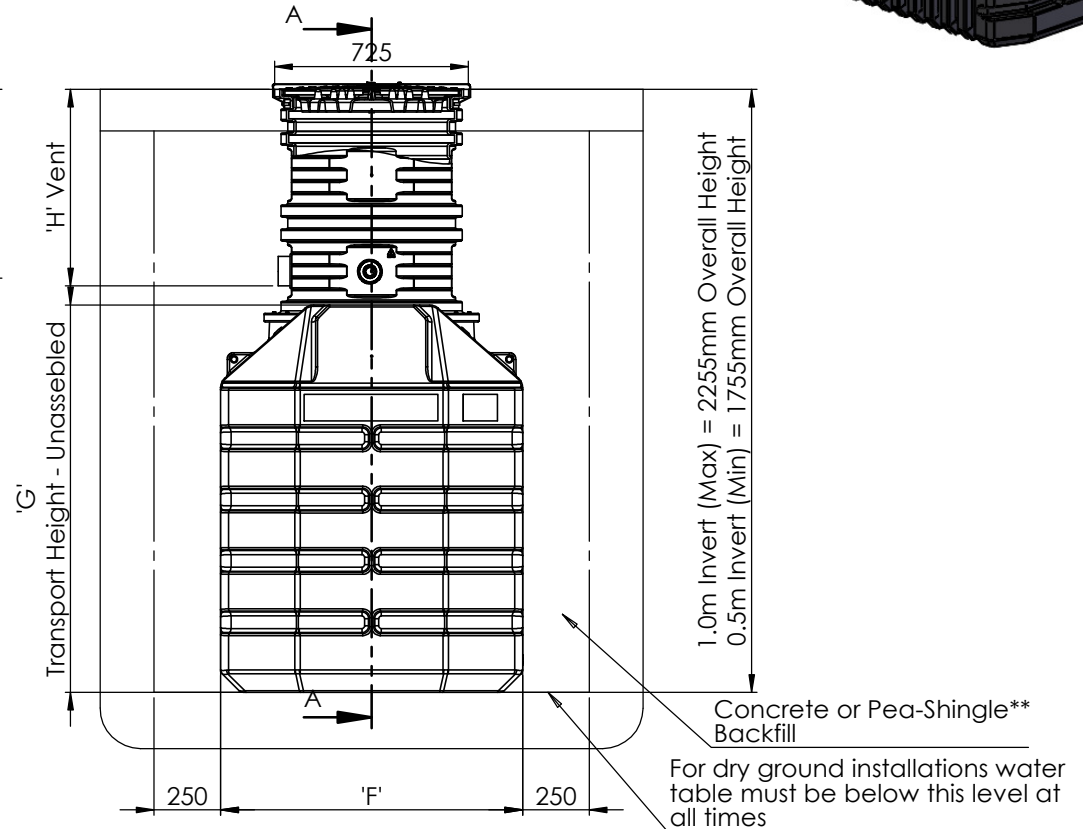
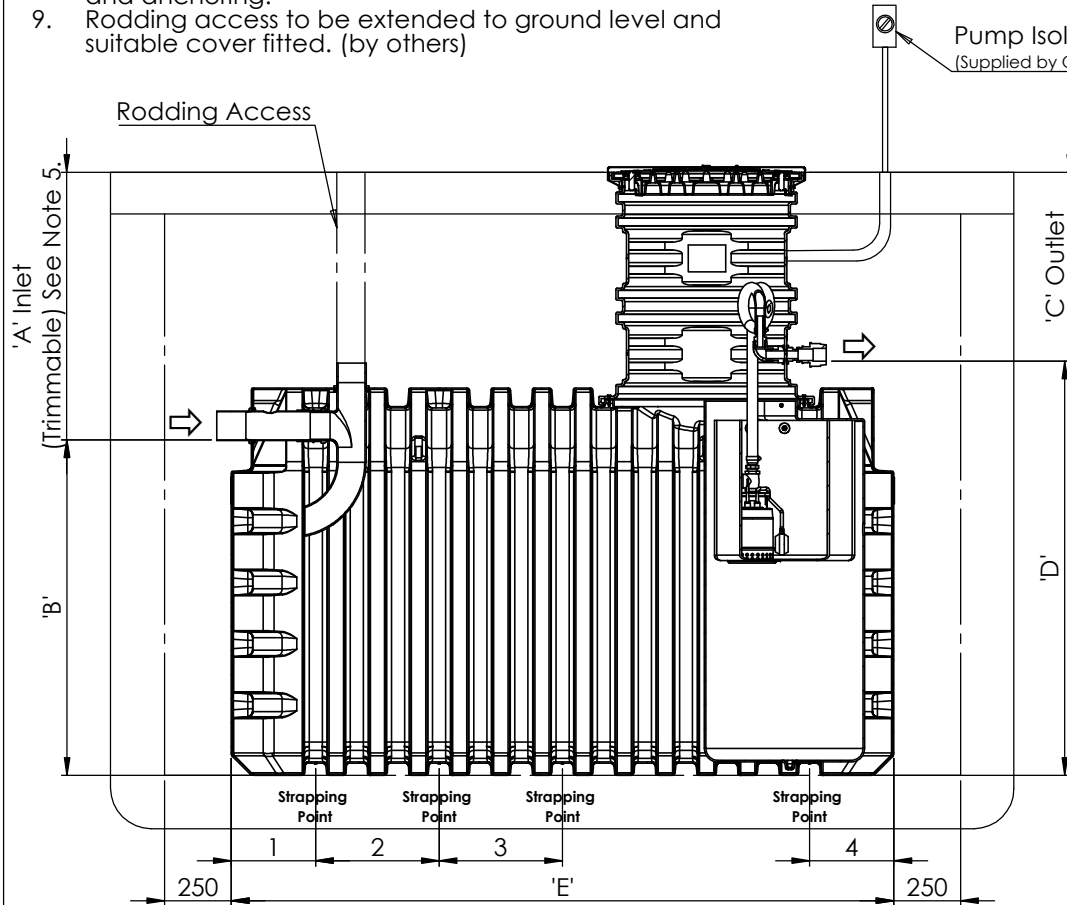
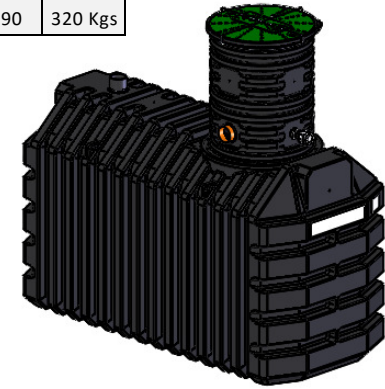
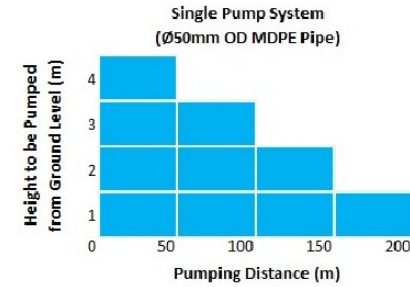


**Notes:**

1. This drawing is for 'Dimensional Information' only. It is essential that this drawing is read in conjunction with the 'Installation Guidelines' supplied with the unit.
2. Inlet & Vent pipe connections are Ø110mm PVCu.
3. Pumped Outlet Fitting - Ø50mm MDPE Compression
4. Additional ventlation can be achieved on the incoming drain, via a stack pipe. Position to suit specific site conditions.
5. Confirm with local building regulations if additional venting is required.
6. Tank has a trimmable Inlet Invert from 0.5m to 1.0m. Neck can be trimmed at 100mm increments to required Invert. Refer to Drawing DS1261P.
7. Keys supplied to open the pedestrian duty cover latches.
8. \*\*Pea-Shingle backfill is reliant on use of correct strapping and anchoring.
9. Rodding access to be extended to ground level and suitable cover fitted. (by others)

Tank Dimensional Table										
Unit	Storage Volume (Ltr)	Dim 'A' (mm)	Dim 'B' (mm)	Dim 'C' (mm)	Dim 'D' (mm)	Dim 'E' (mm)	Dim 'F' (mm)	Dim 'G' (mm)	Dim 'H' (mm)	Tank Weight
GST028TzPK	2800	500-1000	1255	210-710	1545	2480	1130	1450	390	260 Kgs
GST035TzPK	3500	500-1000	1255	210-710	1545	3000	1180	1450	390	290 Kgs
GST040TzPK	4000	500-1000	1255	210-710	1545	3360	1215	1450	390	320 Kgs

Strapping Positions				
Unit	1	2	3	4
GST028TzGK	315mm	460mm	460mm	315mm
GST035TzGK	315mm	800mm	800mm	315mm
GST040TzGK	315mm	900mm	900mm	315mm



Issue	Date	Drawn by	Approved by	Description
03	23/03/17	JMcM		CC1375
02	19/06/15	JMcM		CC1252

Material : Various	Tolerance :
Finish :	Thickness : n/a
Weight : 150.18 Kg Kgs	Surface Area :

**Drawing : DS1260P** Page 1 of 1

GAMMA Septic Tank Sales Drawing - IPS

All dimensions in mm Scale: Not to scale

